

OUTDOOR DISCOVERY WINTER MAP



**LEGEND**

- Non-Motorized Terrain
- National or Provincial Park
- Crown Land
- Ski Touring Accessed Lodge or Hut
- Helicopter Accessed Lodge or Hut
- Snowmobiling Accessed Hut
- Major Highway
- Faded Service Road (FSR)
- Well Known Ski Traverse
- Maintained Snowmobile Route
- Marked Snowmobile Number
- Ice Climbing
- Ski Touring
- Cross Country Skiing
- Downhill Skiing
- Tubing
- Skating
- Ice Fishing
- Snowmobiling
- Guided Snowmobile Trips Available
- Helicopter Skiing
- Helicopter Staging Area
- Cat Skiing
- Distance Marker
- RV Parking
- Gas Station
- Arrow
- Parking

**DISCLAIMER**  
The condition of the trails, roads, attractions, areas or any locations contained on this map are subject to change without warning or notice. Users must exercise extreme caution at all times and be aware of potential dangers such as poor weather/road conditions or unexpected traffic. The authors and publisher of this map will not be held responsible for any breach of municipal, provincial, federal or common law concerning these lands.

**RENTAL VEHICLES**  
We recommend checking with your insurance and rental vehicle company to ensure proper insurance and recovery coverage before attempting travel across unpaved, gravel, and forest service roads.

**GBRAP ZONATIONS**  
The Golden Backcountry (GBRAP) is a community plan that deals with recreational usage of nearly 1 million hectares and sets the recreational pattern of use in the Golden area backcountry. The goal of this plan is to manage the opportunities and experiences needed by recreationalists, both public and commercial based, while protecting important wildlife habitat and other values. It identifies motorized and non-motorized zones, as well as levels of infrastructure development. Please obey the closures outlined in this map.

The Town of Golden, its surrounding area and Glacier and Yoho National Parks are located in bear country. To learn more about what you can do to reduce negative interactions with wildlife please visit the Parks Canada website at [www.parksCanada.gc.ca/bears-and-people](http://www.parksCanada.gc.ca/bears-and-people)

Mountain wilderness areas may not have cell phone coverage or other communication services, from which rescue may be difficult. Some trails are not maintained and have no trail signage. The condition of the trails, roads, attractions, areas or any locations contained on this map are subject to change without warning or notice and may deteriorate or change from descriptions at any time.

**IMPORTANT INFORMATION & CONTACTS:**  
Canadian Avalanche Centre: [www.avalanche.ca](http://www.avalanche.ca)  
RCMP 250-344-2221  
RCMP Emergency 911  
Search & Rescue 250-344-5902  
Safety and essential tips: [www.adventuresmart.ca](http://www.adventuresmart.ca)



ABOUT THE OUTDOOR DISCOVERY MAP  
This map is intended to highlight the amazing backcountry terrain and activities that such. Travelers in the backcountry are advised to carry topographical maps.

**Golden**  
TOURISM  
Golden is located in the heart of Canada's most stunning national parks, the Selkirk, Purcell, and Bugaboo Mountains.



Seek and you will find.  
**GOLDEN RULES**



**GOLDEN OUTDOOR DISCOVERY MAP**  
GOLDEN, BRITISH COLUMBIA, CANADA  
AN OVERVIEW OF DESIGNATED RECREATIONAL AREAS

- SKI TOURING**  
Surrounded by the Rocky Mountains, with Yoho National Park to the east and the Purcell, Selkirk Mountains and famous Glacier National Park to the west, there's no doubt Golden is the best place in the world to start your ski touring adventure. Rogers Pass, the ski touring capital of the world, is just 78 km from Golden. With over 20 backcountry lodges offering inclusive packages of heli transfers, lodging and expert guiding and touring in the backcountry, there is no better place.
- THE GREAT DIVIDE GRAND TRAVERSE**  
This is the longest ski touring traverse in the Rockies that links Jasper to Lake Louise and covers 9 icefields, high peaks and deep valleys. It takes between 20 and 30 days to complete and covers 300 km with 10,000 m of vertical gain. Note: Only a portion of the entire route is shown.
  - WAPTA ICEFIELDS TRAVERSE**  
The most popular ski mountaineering area in Canada. There is an excellent hut system and relatively safe glaciers with access from the highway.
  - NORTHERN SELKIRKS GRAND TRAVERSE**  
This ski touring traverse is 200 km long and takes 15-20 days to complete. It has a vertical gain of 11,000 m. Note: Shown only in-part. Actual route may vary.
  - BUGABOOS TO ROGERS PASS GRAND TRAVERSE**  
This popular ski tour takes you through some of the most spectacular mountain terrain in North America. Typical completion time is between 10 and 15 days and covers 130 km with 10,000 m of vertical gain in high alpine glacier terrain. Note: Actual route may vary depending on snow conditions.

- ROGERS PASS NATIONAL HISTORIC SITE**  
In 1881 Major A.B. Rogers was hired by Canadian Pacific Railway to find a pass through the mountains. In 1885 the railway was completed with a series of bridges and snow sheds to protect it from avalanches.
  - BIRTH PLACE OF HELI-SKIING**  
This is the region where Heli-skiing was born in 1965, as Hans Gmoser pioneered the first ever commercial Heli-skiing descent in the Purcell's Bugaboo Mountains. Just 8 years later Golden had its own Heli-skiing company.
- STAY IN GOLDEN**  
Golden is known as a spectacular recreation playground. Enjoying what Golden has to offer is even better after a great night's sleep and we have a wide range of accommodations to suit every budget, group size and location.
- For accommodation information visit:  
[tourismgolden.com](http://tourismgolden.com)  
or call 1-250-439-7290

**ACCESS THE MOBILE APP TO GET GOLDEN ON THE GO.**  
WiFi hotspots are also provided at the Kicking Horse Country Chamber of Commerce, outside 521 9th Avenue North, Spirit Square and at the Golden Civic Centre. Use the WiFi hotspots to add the Tourism Golden web app to your device.

If you're travelling without your own device, digital kiosks providing access to [tourismgolden.com](http://tourismgolden.com) are situated in the Glacier Mountaineer Lodge at Kicking Horse Mountain Resort, the Kicking Horse Country Chamber of Commerce, the Best Western, and the Ramada. Visit [www.tourismgolden.com/visitors](http://www.tourismgolden.com/visitors) for more information.

**SAFETY IS YOUR RESPONSIBILITY**  
Safety in the mountains, particularly in the winter, should be taken very seriously.

Please ensure that you are prepared with the correct equipment, training, skills, knowledge, and expertise before venturing out. In particular, know the avalanche risk areas.

Check road and weather conditions, including avalanche risk, active logging, and restrictions that may be applied to forest service roads. Pack adequate food, water, clothing, topographical maps, and gear including a first aid kit and bear spray. Travel in a group. Tell someone where you are going, when you will be back, and an emergency contact number if you do not return.



View the Golden Snowmobile Trail Map online or pick up a copy from one of the many locations around town.  
[tourismgolden.com/plan](http://tourismgolden.com/plan)

**OUTDOOR  
DISCOVERY  
SUMMER MAP**

**LEGEND**

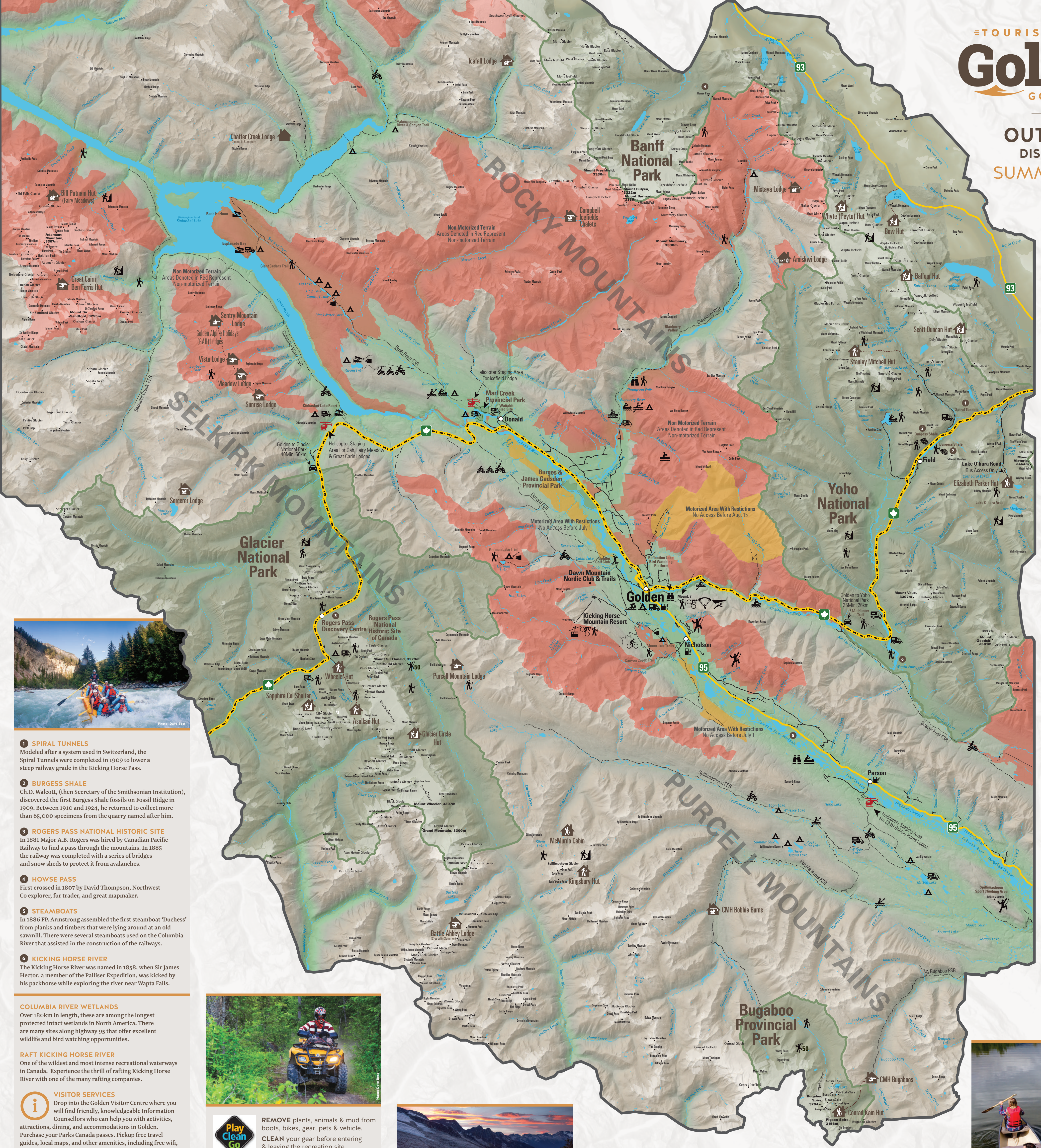
- Non-Motorized Terrain with Restrictions
- Non-Motorized Terrain
- National or Provincial Park
- Crown Land
- Hike Accessed Lodge or Hut
- Helicopter Accessed Lodge or Hut
- Mountaineering Accessed Hut
- National or Provincial Park Boundary Line
- Major Highway
- Paved Highway
- Forest Service Road (FSR)
- Popular Hiking Trail
- Marked Highway Number
- Rock Climbing
- Mountaineering
- Hiking
- Hang Gliding
- Paragliding
- Fishing
- \*Downhill Biking
- \*XC Biking
- Swimming
- Wildlife Viewing
- 50 Classic Climbs
- Kayaking
- Canoeing
- Rafting
- Golf
- \*Common ATV Roads
- \*Guided ATV Trips
- Boat Launch
- Tenting
- RV Parking
- Helicopter Staging Area
- Distance Marker
- Gondola
- Gas Station
- Arrow

**DISCLAIMER**  
The condition of the trails, roads, attractions, areas or any locations contained on this map are subject to change without warning or notice. Users must exercise extreme caution at all times and be aware of potential dangers such as poor weather/road conditions or unexpected trails. The authors and publisher of this map play no part in the maintenance and/or supervision of any activity or location featured or shown on this map.

**RENTAL VEHICLES**  
We recommend checking with your insurance and rental vehicle company to ensure proper insurance and recovery coverage before attempting travel across unimproved, gravel, and forest service roads.

**RENTAL VEHICLES**  
\*The use of quads, snowmobiles, dirt bikes, or other off-road vehicles is prohibited from national and provincial parks. Mountain biking in national parks is subject to restrictions. For more information visit [www.parks.gc.ca](http://www.parks.gc.ca)

**GBRAP ZONATIONS**  
The Golden Backcountry Recreational Access Plan (GBRAP) is a community plan that deals with recreational usage of nearly 1 million hectares and sets the recreational patterns of use in the Golden area backcountry. The goal of this plan is to manage the opportunities and experiences needed by recreationists, both public and commercial, while protecting important wildlife habitat and other values. It identifies motorized and non-motorized zones, as well as levels of infrastructure development. Please obey the closures outlined in this map.



- 1 SPIRAL TUNNELS**  
Modeled after a system used in Switzerland, the Spiral Tunnels were completed in 1909 to lower a steep railway grade in the Kicking Horse Pass.
- 2 BURGESS SHALE**  
Ch.D. Walcott, (then Secretary of the Smithsonian Institution), discovered the first Burgess Shale fossils on Fossil Ridge in 1909. Between 1910 and 1924, he returned to collect more than 65,000 specimens from the quarry named after him.
- 3 ROGERS PASS NATIONAL HISTORIC SITE**  
In 1881 Major A.B. Rogers was hired by Canadian Pacific Railway to find a pass through the mountains. In 1885 the railway was completed with a series of bridges and snow sheds to protect it from avalanches.
- 4 HOWSE PASS**  
First crossed in 1867 by David Thompson, Northwest Co explorer, fur trader, and great mapmaker.
- 5 STEAMBOATS**  
In 1886 F.P. Armstrong assembled the first steamboat 'Duchess' from planks and timbers that were lying around at an old sawmill. There were several steamboats used on the Columbia River that assisted in the construction of the railways.
- 6 KICKING HORSE RIVER**  
The Kicking Horse River was named in 1858, when Sir James Hector, a member of the Palliser Expedition, was kicked by his packhorse while exploring the river near Waipa Falls.

**COLUMBIA RIVER WETLANDS**  
Over 180km in length, these are among the longest protected intact wetlands in North America. There are many sites along highway 95 that offer excellent wildlife and bird watching opportunities.

**RAFT KICKING HORSE RIVER**  
One of the wildest and most intense recreational waterways in Canada. Experience the thrill of rafting Kicking Horse River with one of the many rafting companies.

**VISITOR SERVICES**  
Drop into the Golden Visitor Centre where you will find friendly, knowledgeable Information Counsellors who can help you with activities, attractions, dining, and accommodations in Golden. Purchase your Parks Canada passes. Pickup free travel guides, local maps, and other amenities, including free wifi, are also available. Open during the summer months.

**Golden Visitor Centre**  
1000 Trans Canada Highway

WiFi hotspots are also provided at the Kicking Horse Country Chamber of Commerce, outside 521 9th Avenue North, Spirit Square, and at the Golden Civic Centre. Use the WiFi hotspots to add the Tourism Golden app to your device.

If you're travelling without your own device, digital kiosks providing access to [www.tourismgolden.com](http://www.tourismgolden.com) are situated in the Glacier Mountaineer Lodge, the Kicking Horse Country Chamber of Commerce, the Best Western, the Ramada, and the Golden Visitor Centre. Visit [www.tourismgolden.com/visitors](http://www.tourismgolden.com/visitors) for more information.



**Play Clean Go**  
STOP INVASIVE SPECIES IN YOUR TRACKS

**REMOVE** plants, animals & mud from boots, bikes, gear, pets & vehicle.  
**CLEAN** your gear before entering & leaving the recreation site.  
**STAY** on designated trails.

For more information contact Columbia Shuswap Invasive Species Society (CSISS) [www.columbiashuswapinvasives.org](http://www.columbiashuswapinvasives.org)



**STAY IN GOLDEN**  
Golden is known as a spectacular recreation playground. Enjoying what Golden has to offer is even better after a great night's sleep and we have a wide range of accommodations to suit every budget, group size, and location.

For accommodation information visit:  
[tourismgolden.com](http://tourismgolden.com)  
or call 1-250-439-7290

**SAFETY IS YOUR RESPONSIBILITY**  
Safety in the mountains, particularly in the winter, should be taken very seriously.

Please ensure that you are prepared with the correct equipment, training, skills, knowledge, and expertise before venturing out. In particular, know the avalanche risk areas.

Check road and weather conditions, including avalanche risk, active logging, and restrictions that may be applied to forest service roads. Pack adequate food, water, clothing, topographical maps, and gear including a first aid kit and bear spray. Travel in a group. Tell someone where you are going, when you will be back, and an emergency contact number if you do not return.

The Town of Golden, its surrounding area and Glacier and Yoho National Parks are located in bear country. To learn more about what you can do to reduce negative interactions with wildlife please visit the Parks Canada website at [www.parksCanada.gc.ca/bears-and-people](http://www.parksCanada.gc.ca/bears-and-people) [www.parkscanada.gc.ca/bare-campsite](http://www.parkscanada.gc.ca/bare-campsite)

Mountain wilderness areas may not have cell phone coverage or other communication services, from which rescue may be difficult. Some trails are not maintained and have no trail signage. The condition of the trails, roads, attractions, areas or any locations contained on this map are subject to change without warning or notice and may deteriorate or change from descriptions at any time.



**IMPORTANT INFORMATION & CONTACTS:**  
Canadian Avalanche Centre: [www.avalanche.ca](http://www.avalanche.ca)  
RCMP 250-344-2221  
RCMP Emergency 911  
Search & Rescue 250-344-5902  
Safety and essential tips: [www.adventuresmart.ca](http://www.adventuresmart.ca)